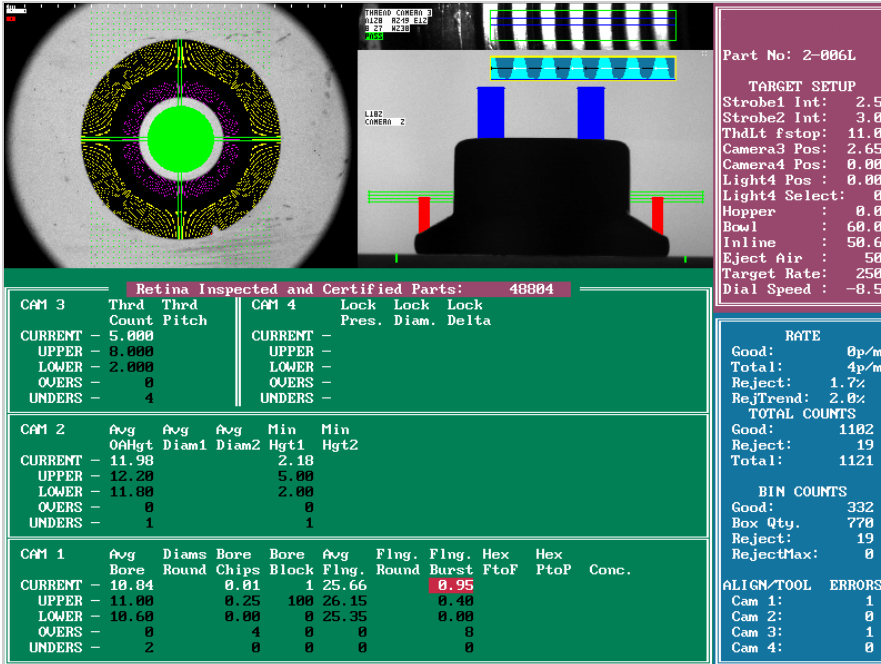


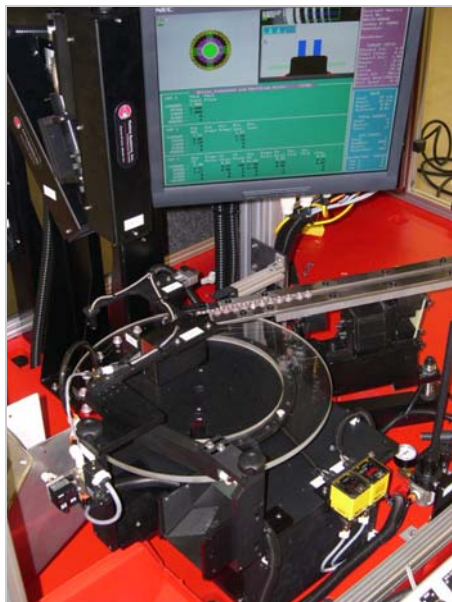


## NEXT-GENERATION Model 300 Series Internally Threaded Fasteners

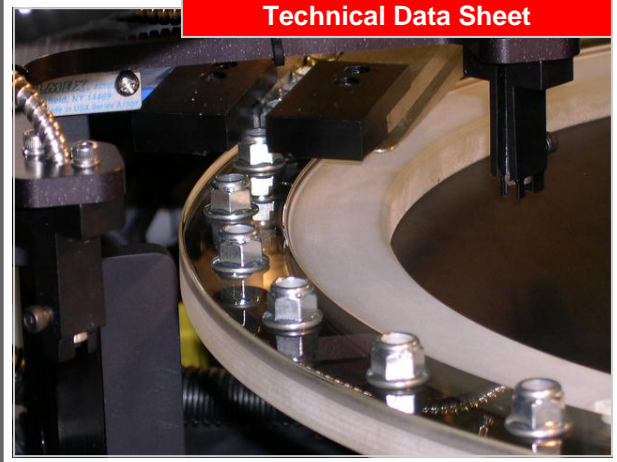


Retina's standard Model 323 Vision Inspection System is the ideal solution for internally threaded fasteners and stamped product. This system inspects for Thread Presence, Prevailing Torque (Lock Features), Concentricity, Bore Chips/Blockage, Flange Bursts/Cracks, Dimensional Diameters & Heights and more.

For over 21 years, Retina Systems' personnel have provided non-contact, automated turnkey inspection systems, packaging systems, application expertise, service and support. Our application driven process delivers technology and product solutions based on customer's specific inspection requirements. More importantly, it provides the opportunity to set up, test, and validate the inspection method prior to design and manufacture of the system putting you, the customer, at NO RISK!



### Technical Data Sheet



## The Retina Solution

### Inspect

With over 15 standard model inspection systems, we have a solution to fit your needs. We use MINITAB statistical software to certify each dimensional inspection, putting you at no-risk to your customers. Dynamic repeatability of 0.001" or better in a production environment is accomplished with your application in mind.

### Count

With our U.S. patented material handling systems, each part is carried through the entire inspection process. Bad parts are rejected and good parts are ejected and counted into a container of your choice. The inspection system records the exact count of good parts, bad parts, and total parts with rate in parts per minute and reject %.

### Package

You don't want to add another bulk process after inspection. *Inspect, Count, and Package.* Retina's automated packaging conveyors and integrated baggers should be added inline with your inspection system to eliminate any potential contamination associated with bulk packaging.

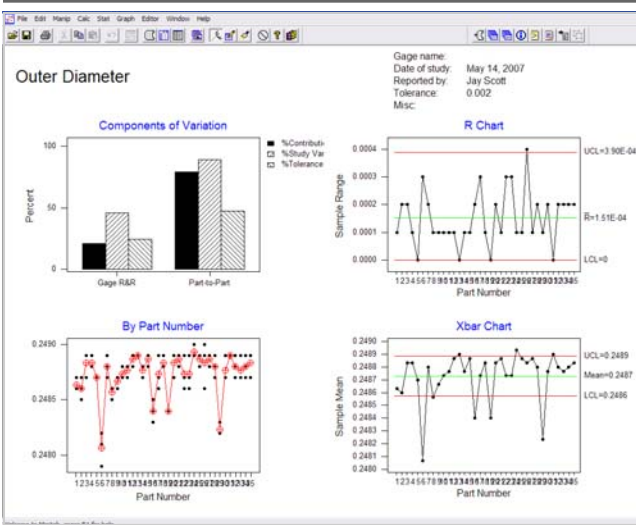
### Report

M.O.R.E. Reporting (Monitoring Operations & Runtime Efficiencies) comes standard on all 300 series Vision Systems. Retina Vision Systems give management the production data they want to track and predict throughput and system efficiencies for your LEAN and Six Sigma programs.



# Retina Systems, Inc.

*Inspect, Count, Package, Report*



## Statistically Proven! Zero-Defects, 100% Certified

Using MINITAB® statistical software, we certify every dimensional inspection dynamically for a Zero-Defect environment. Using an ANOVA based Gauge R&R and a Process Capability study, the repeatability of the system is never in question. Reliable, dependable, vision inspection that works 24 hours/day, 7 days/week, Retina Certified!

## M.O.R.E. Reporting & Remote Access Support

### Monitoring Operations & Runtime Efficiencies



(M.O.R.E.) is included on all new 300 Series Vision Inspection Systems with 9 standard reports to track throughput, lot, operator, and system production and efficiencies. Remote Access Support enables a Retina technician to remotely "dial in" to the vision system through the Internet allowing upgrades, service, and system diagnostics anywhere in the world!

Retina Vision Systems provide machine operators the ability to view processed images and inspection data simultaneously. Quantitative data is stored & displayed for an "eye" back into the manufacturing process.

U.S. Patented material handling systems provide repeatable part presentation to the RETINA VISION modules. Parts are carried through the inspection process at rates up to 600 parts per minute.

Touch Screen monitors with simple user interface are standard. Barcode scanners are available for easy and fast part change-overs and data entry. Bulk feed hoppers and automated packaging complete the solution.



# Retina Systems, Inc.

*Inspect, Count, Package, Report*

146 Day Street • Seymour, CT 06483 ☎ 203.881.1311 • Fax: 203.881.1494

[www.retinasystems.com](http://www.retinasystems.com) • [sales@retinasystems.com](mailto:sales@retinasystems.com)